

Milestone Solution Design

Training class agenda (v2.53a)



Note: This is an online class. See the list of Technical Requirements on page 2 below.

Target audience

The target audience includes entry- to mid-level security and surveillance professionals who have the direct responsibility to design Milestone surveillance systems, as well as entry- to mid-level technical sales professionals who want to better understand and position the Milestone Advanced platform to their customers.

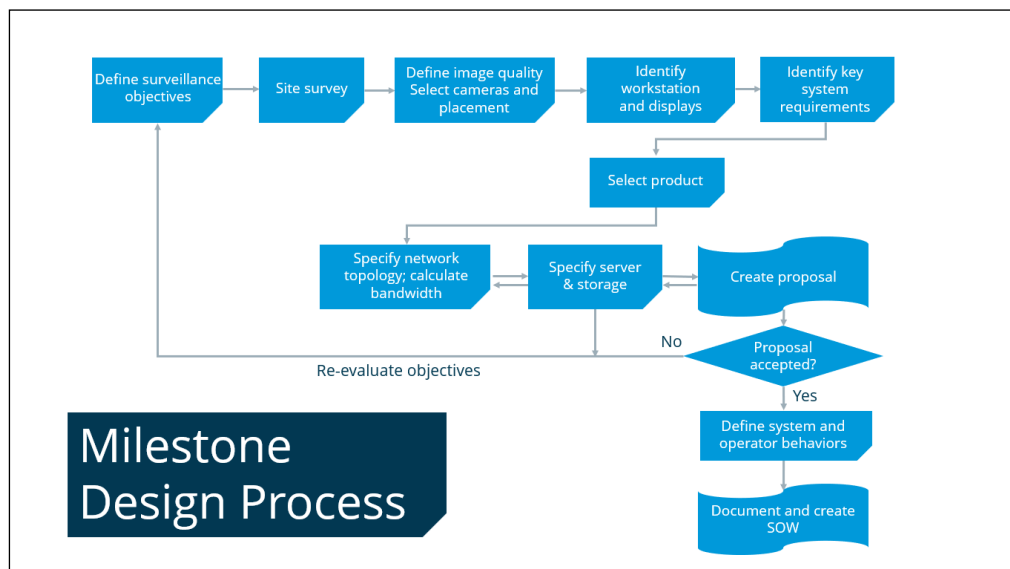
Course description

The Milestone Solution Design two-day training class provides attendees with the knowledge and skills needed to design Milestone XProtect® VMS surveillance systems that effectively support customers' surveillance objectives and optimize return on investment. During this class, attendees will concentrate on best practices in customer needs identification, information collection, and making video surveillance design decisions.

Attendees use the Milestone Solution Design Process, job aids, and additional tools provided in class to design effective solutions for real-life scenarios. A professional facilitator guides attendees to meet stated requirements and provides expertise in Milestone best practices.

Attending this workshop helps prepare you to take the Milestone Certified Design Engineer (MCDE) online assessment.

The course duration is two full working days, 9:00 AM to 5:00 PM, with a total seat time of 12 hours.



Prerequisites

We strongly recommend attendees complete the [Milestone Design Engineer Training Track](#) before attending the class.

Training Tracks are available in the eLearning section of the Milestone Partner Learning Portal.

Technical requirements

- Internet access.
- 1Mbit/s available download and upload bandwidth.
- Low latency (high-latency satellite internet not recommended).
- Headset or speakers to hear the instructor (a microphone is recommended).
- Internet browser. The Firefox browser is NOT supported. Please use another browser such as Chrome or Edge.

Class materials

Each attendee will receive the following downloadable materials in class:

- Milestone Solution Design Handbook
- Milestone Solution Design Reference Book
- Milestone Solution Design Network Topology

Agenda (2 days)

Day 1:

Design Course Introduction
Defining Surveillance Objectives
Performing a Site Survey
Determining Image Quality and Camera Placement
Identifying Roles and Designing Workstations
Determining Key System Requirements
Choosing the Right Milestone Product

Day 2:

Specifying Network Topology
Developing Proposals
Defining System and Operator Behaviors
Documenting Work

Hands-on exercises

Defining Surveillance Objectives

- Exercise 1: Identifying Surveillance Objectives

Performing a Site Survey

- Exercise 2: Discussing Site Survey Best Practices

Determining Image Quality and Camera Placement

- Exercise 3: Determining dimensions from surveillance images
- Exercise 4: Calculating image resolution for license plate recognition
- Exercise 5: Calculating Retail Entrance Resolution
- Exercise 6: Selecting and Placing Cameras

Identifying Roles and Designing Workstations

- Exercise 7: Assigning Workstations

Determining Key System Requirements

- Exercise 8: Examining Real-World Scenarios (key elements)
- Exercise 9: System Hardening Scenarios (cybersecurity)

Choosing the Right Milestone Product

- Exercise 10: Choosing XProtect VMS Products

Specifying Network Topology

- Exercise 11: Designing Network Topology

Developing Proposals

- Exercise 12: Calculating XProtect Licenses

Documenting Work

- Exercise 13: Exploring Statement of Work Elements